



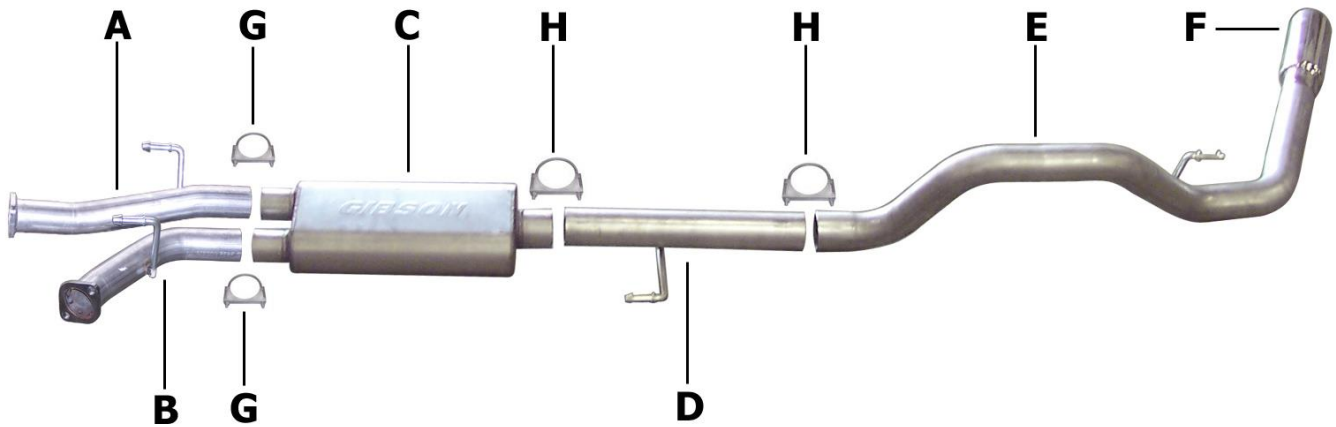
Installation Instructions

Cat-Back Stainless Single Exhaust

Toyota Tundra 4.6L, 4.7L, 5.7L 2/4wd

Regular Cab, Standard Bed

Part #618604B



| ITEM | PART | QUANTITY | DESCRIPTION |
|------|--------------|----------|--|
| A | 1175-700935S | 1 | 2.5" Stainless Passenger Side Headpipe |
| B | 1176-700936S | 1 | 2.5" Stainless Driver Side Headpipe |
| C | 789806S | 1 | Stainless Superflow CFT Muffler |
| D | 1148-700907S | 1 | 3" Stainless Extension Pipe |
| E | 1149-700908S | 1 | 3" Stainless Overaxle Tailpipe |
| F | 500641-B | 1 | Black Ceramic Tip |
| G | 5757 | 2 | 2.5" Clamp |
| H | OHD300 | 2 | 3" Clamp |

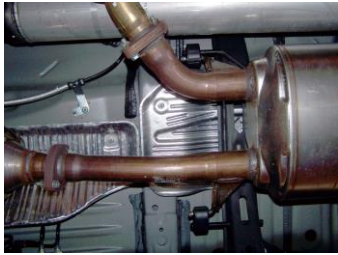
Thank you for purchasing our Gibson Exhaust System for your vehicle.
If you need further assistance, please do not hesitate to call our technical department at
(800) 528 -3044 Monday through Friday, 8am to 5 pm.

Installation Instructions #618604B

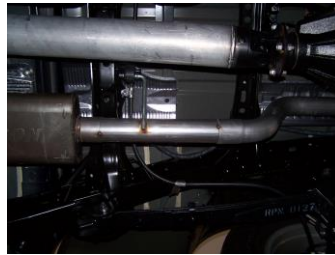
When installing this exhaust system make sure to use proper safety precautions. Use jack stands when working under the vehicle, set parking brake, block tires and use safety glasses and gloves. Allow exhaust to cool before attempting installation. Severe injury or burns could occur if safety measures are not taken.

SUGGESTED TOOLS: 1/2", 9/16", 15mm wrenches & sockets, WD-40, hacksaw, jack stands

1. Disconnect the negative battery cable before removal of OEM exhaust. This will allow the computer to reset and recognize the new exhaust. Lay out the exhaust on the floor so it looks like the drawing and compare parts with manual.



2. Remove the stock exhaust at the 2-bolt flange located in front of the muffler. Disengage the welded hangers from the OEM rubber grommets. Use WD-40 to help in the process. Do not damage or remove the rubber grommets as you will reuse them to mount your new system. Now, unbolt the tailpipe and remove exhaust. Do not throw away stock flange bolts, as you will reuse them.



5. Install rear extension pipe #D onto muffler. Insert welded hanger into rubber grommet. Use clamp #H to secure the pipe. Do not tighten.



3. Install passenger side headpipe #A using your stock bolts. Do not tighten. Next, install driver side headpipe #B using stock bolts. Do not tighten. Install metal hangers into rubber grommets.



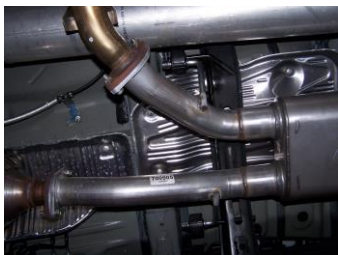
6. Install the overaxle tailpipe #E to the rear extension pipe #D. Use clamp #H to secure pipe. Do not tighten. Install hanger into rubber grommet.



4. Install muffler onto headpipes 1.5"-2" with the louvers facing towards the converter. Use a jack stand to support the muffler. Use clamps #G to secure the muffler to the headpipe. Do not tighten. Muffler inlet is looking into the louvers.



8. Install stainless steel tip. Clamp down. When you have everything in place, firmly tighten all bolts and clamps down securely. Use stainless steel cleaner and a Scotch Brite pad weekly to prevent tip from discoloration. Inspect all fasteners after 25-50 miles of operation and re-tighten as necessary. You may need to cut your stock tail pipe back to get your tip to fit correctly.



GIBSON EXHAUST systems are designed on a factory stock vehicle
Any aftermarket products installed could increase the sound levels of the exhaust.
Make sure there is a 1" clearance from ALL rubber brake lines, shock boots, lines, tires, etc. to prevent heat related damage or fire.